

Next steps.
(Register kit and access available support.)

12 **Register Your Kit**
To gain access to additional documentation and software, register your Zoom™ 4.3” WQVGA Display Kit on Logic PD’s support site:
<http://support.logicpd.com/TechnicalSupport/RegisterProduct.aspx>

13 **Access Documentation and Software Downloads**
Logic PD provides additional documentation resources for the Zoom 4.3” WQVGA Display Kit. After registering your display kit and logging in to the Logic PD Support Site, these resources are available on the display kit product page:
<http://support.logicpd.com/ProductDownloads/LegacyProducts/DisplayKits.aspx>

14 **Subscribe to Technical Discussion Group Forum**
Subscribe to the Logic PD Technical Discussion Group (TDG) forum to share valuable information with our designers, post questions requesting support, and receive automatic notifications when new posts regarding your display kit are made available:
<http://support.logicpd.com/TDGForum.aspx>

Product notices.

Evaluation Purposes Only

This Logic PD Zoom 4.3” WQVGA Display Kit is intended for engineering development or evaluation purposes only and is not considered by Logic PD to be fit for commercial use. As such, the goods being provided may not be complete in terms of required design, marketing, and/or manufacturing-related protective considerations, including product safety measures typically found in the end product incorporating the goods. The user assumes all responsibility and liability for proper and safe handling of the Zoom 4.3” WQVGA Display Kit.

Warranty Statement

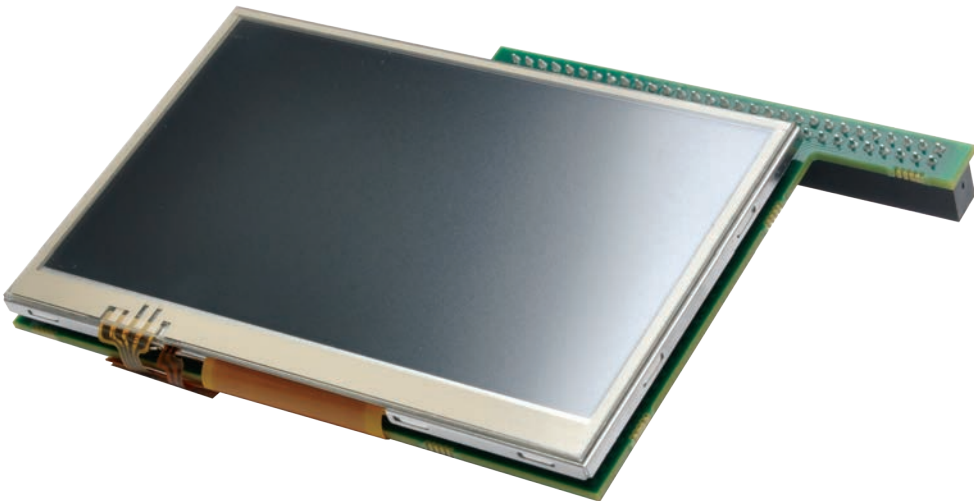
For warranty information, please refer to the warranty document included in the Zoom 4.3” WQVGA Display Kit box.

Electrostatic Discharge

Due to the open construction of this product, it is the user’s responsibility to take any and all appropriate precautions with regard to electrostatic discharge (ESD). Logic PD’s warranty does not cover products damaged by ESD.

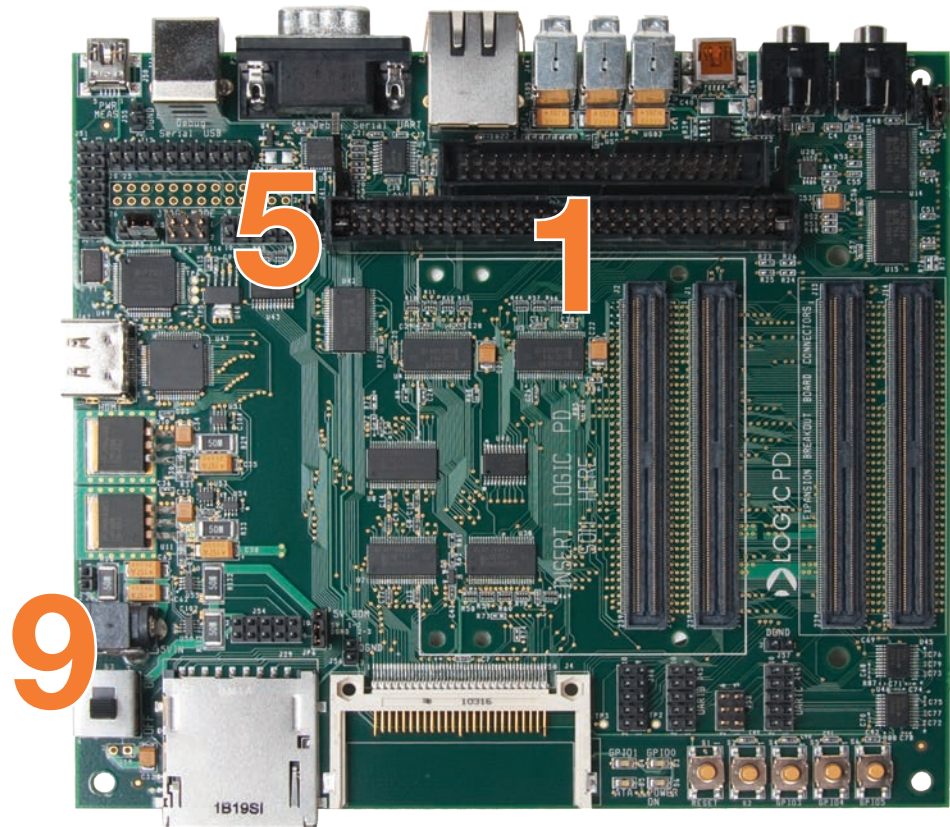
ZOOM™
4.3” WQVGA
Display Kit

QuickStart Guide

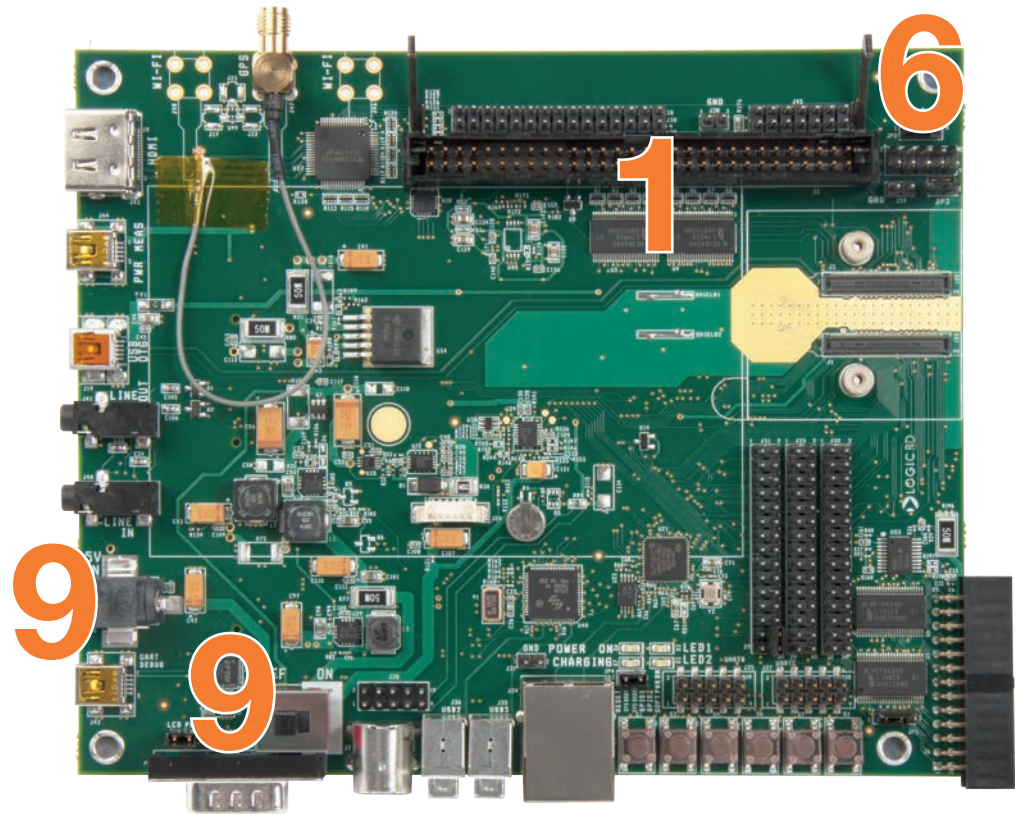


Congratulations on your purchase of the Zoom 4.3” WQVGA Display Kit. The 4.3” LCD connects directly to Logic PD’s DM3730 SOM-LV Development Kit and DM3730 Torpedo™ Development Kit baseboards, allowing you to immediately begin development work.

Important locations on DM3730 SOM-LV Development Kit baseboard.
(Numbers correspond to steps on the right. Baseboard for reference only; not included with display kit.)



Important locations on DM3730 Torpedo™ Development Kit baseboard.
(Numbers correspond to steps on the right. Baseboard for reference only; not included with display kit.)



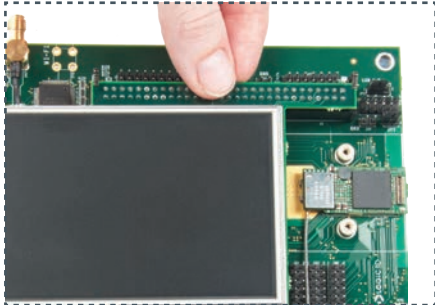
Display kit setup.
(Attach and interact with LCD.)



1 Locate 60-pin LCD connector on baseboard (SOM-LV: J11, Torpedo: J3).



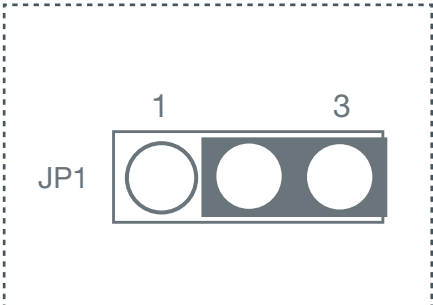
2 Align keyed connector on LCD board with baseboard 60-pin LCD connector.



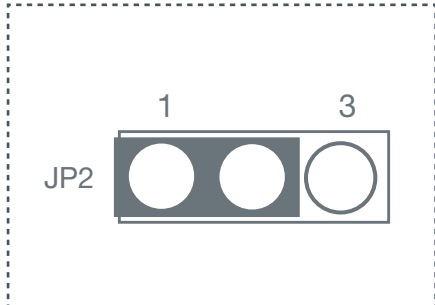
3 Press straight down on LCD board until connector levers move to vertical position.



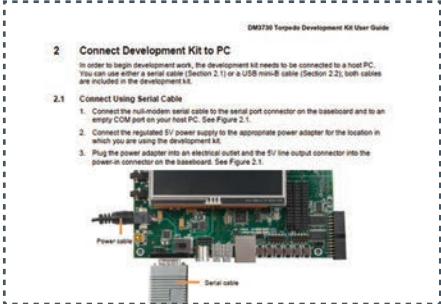
4 Before using LCD touch screen, remove protective plastic film covering.



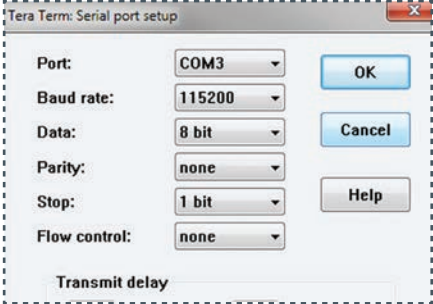
5 If connecting to SOM-LV baseboard, place jumper JP1 across pins 2 and 3.



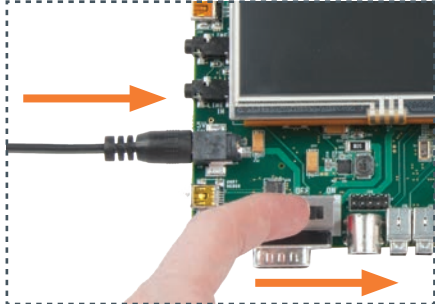
6 If connecting to Torpedo baseboard, place jumper JP2 across pins 1 and 2.



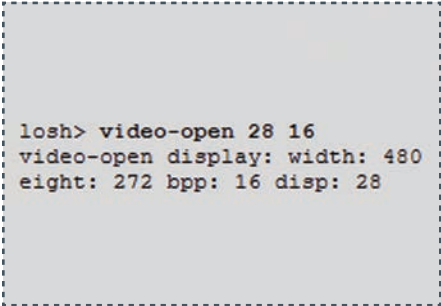
7 Connect development kit to host PC as described in kit user guide.



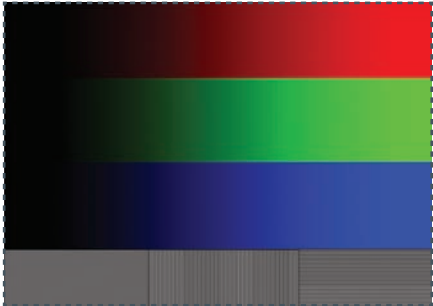
8 Open Tera Term and use port settings described in kit user guide.



9 Connect power to baseboard and electric outlet; switch power on.



10 To initialize LCD, type "video-open 28 16" at losh> prompt and press Enter.



11 To display test image, type "draw-test" at losh> prompt and press Enter.

Next steps

