



Upgrade Instructions:

Zoom OMAP34x-II MDP to Zoom OMAP36x MDP

These instructions describe the process of upgrading a Zoom OMAP34x-II MDP using the OMAP3630 SOM-LV. Please read them in their entirety before attempting the upgrade.

Upgrade Kit Contents

- OMAP3630 SOM-LV in ESD bag

Required Materials for Upgrade

- ESD compliant wrist strap
- ESD compliant surface
- 1.3mm (0.050") HEX screwdriver

Step 1: Prepare Zoom OMAP34x-II MDP for Upgrade

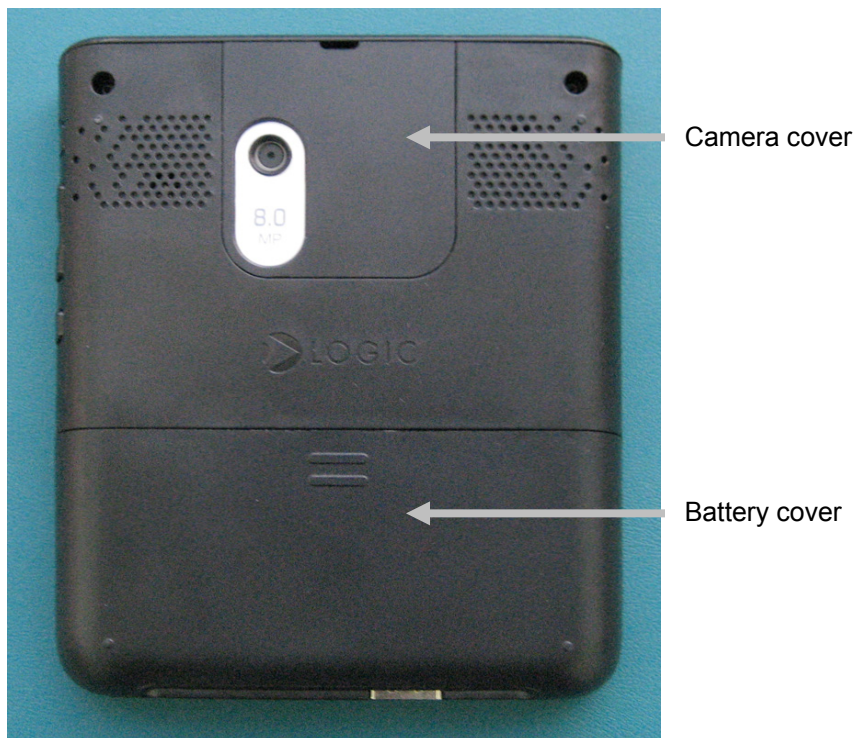
1. Turn off the power to the Zoom OMAP34x-II MDP and unplug the DC power connector.

Step 2: Follow Proper ESD Procedures

1. Put on an ESD wrist strap prior to handling the PCBs.
2. Test the ESD wrist strap to ensure it is functioning properly.
3. Verify the ESD compliant surface contains enough space for all the components.

Step 3: Remove the OMAP3430 SOM-LV from the Zoom OMAP34x-II MDP

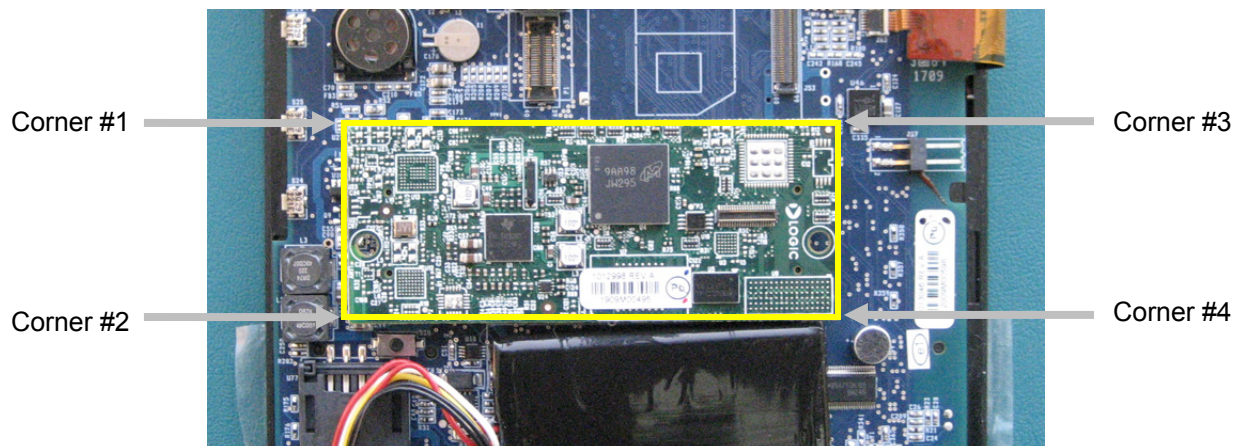
1. Remove the camera and battery covers from the back side of the MDP handheld.



2. Disconnect the battery.
3. Remove the four mounting screws from the back side of the MDP handheld using a 1.3mm HEX screwdriver.



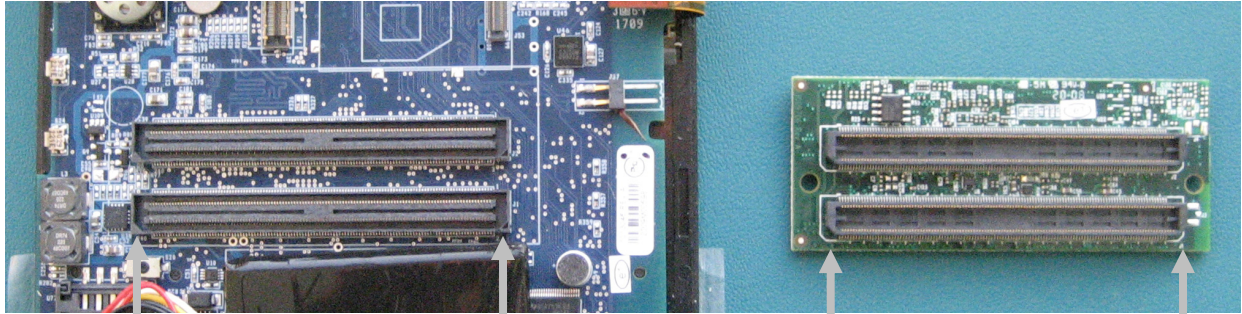
4. Remove the back side casing of the MDP handheld by sliding the casing toward the bottom of the handheld in order to clear the bottom connectors and then lifting up on the casing.
5. Using your fingers, carefully lift up on all four corners of the OMAP3430 SOM-LV until it becomes loose and can be removed from the baseboard. To keep from damaging the OMAP3430 SOM-LV during removal, take care not to bend the PCB.



6. Place the OMAP3430 SOM-LV on the ESD compliant surface.

Step 4: Install the New OMAP3630 SOM-LV

1. Remove the new OMAP3630 SOM-LV from its ESD bag
2. Take note of the proper orientation for the OMAP3630 SOM-LV. The connectors are notched at the corners so the SOM will only fit in one orientation. Also, the baseboard silkscreen has an outline of the SOM showing its proper positioning.



Notched corners on mating connectors

Notched corners on SOM-LV connectors

3. Insert the OMAP3630 SOM-LV by pressing straight down with even pressure over the mating connectors.
4. Visually verify that the connectors have mated correctly.
5. Replace the back side casing of the MDP handheld and secure with the four mounting screws. **IMPORTANT:** Do not over tighten the screws.
6. Replace the camera and battery covers on the back side of the MDP handheld.
7. Reuse the ESD bag that contained the new OMAP3630 SOM-LV to store the old OMAP3430 SOM-LV.

Your Zoom OMAP34x-II MDP has now been upgraded to a Zoom OMAP36x MDP.

Visit <http://omapzoom.org> for useful guides and resources.