

:: Zoom MDK ::

Zoom



LOGIC

QuickStart Guide www.logicpd.com

We fast forward
the evolution of
new products.

Table of Contents

1	Introduction	4
1.1	Development Kit Contents	4
1.2	Documentation and Software Resources	4
2	Development Kit Feature Diagrams	5
2.1	Baseboard Connection Diagram	7
3	Before Beginning	9
3.1	Connect the Battery	9
4	Next Steps	11
4.1	Board Support Packages (BSPs)	11
4.2	Charging the Zoom MDK	11
5	Product Notices	12
6	Product Registration	13
7	Support Resources	14
7.1	Frequently Asked Questions	14
7.2	Technical Discussion Group	14
7.3	Warranty Statement	14

Table of Figures

Figure 2.1 –Development Kit Features (Front)	5
Figure 2.2 –Development Kit Features (Back)	5
Figure 2.3 –Development Kit Features (Left-side)	6
Figure 2.4 –Development Kit Features (Right-side)	6
Figure 2.5 –Connection Diagram for the Baseboard (Front)	7
Figure 2.6 –Connection Diagram for the Baseboard (Back)	8
Figure 3.1 –Battery connector on PCB	9
Figure 3.2 –Connected battery	10
Figure 3.3 –Fasten battery cover in place	10

1 Introduction

Congratulations on your purchase of the Zoom™ Mobile Development Kit. The Zoom Mobile Development Kit (MDK) provides a product-ready hardware and software platform for evaluating the functionality of Texas Instruments' OMAP™ processor and the System on Module (SOM). Logic's embedded solutions fast forward product development and helps your company stay focused on your high-value core technologies.

1.1 Development Kit Contents

The Zoom MDK includes the following items:

- +MDK
- +Plastic bag containing battery cover and two screws
- +USB A to mini-B cable
- +QuickStart Guide

1.2 Documentation and Software Resources

Logic offers documentation, software, and other resources as downloadables from our website. Please create an account and register your product to access these documents and resources: <https://www.logicpd.com/auth/>.

Product Documentation

- +Bill of Materials (.pdf format) for SOM-LV and application baseboard
- +Schematics for SOM-LV and baseboard
- +Layouts for SOM-LV and baseboard
- +SOM-LV Hardware Specification
- +Application Notes, White Papers, and Product Change Notifications (PCNs)

Software

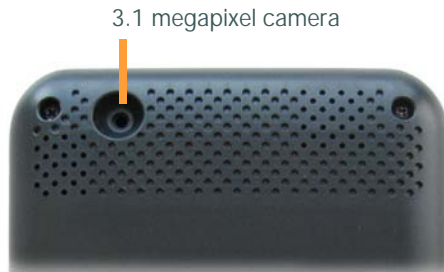
- +Open source Linux Board Support Package (BSP)
- +Links to partner sites providing additional BSPs and resources

2 Development Kit Feature Diagrams

Figure 2.1 – Development Kit Features (Front)



Figure 2.2 – Development Kit Features (Back)



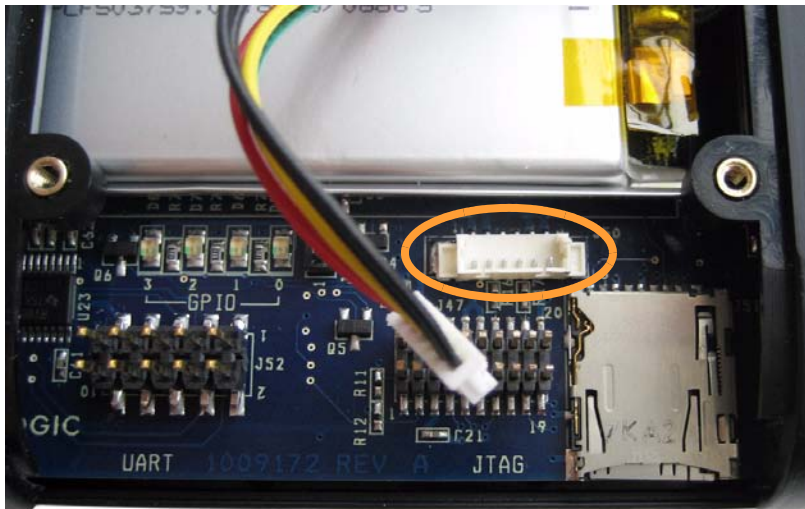
3 Before Beginning

3.1 Connect the Battery

The Zoom MDK comes with the 1100 mAh Li-ion battery installed, but not connected. Follow the steps below to connect the battery.

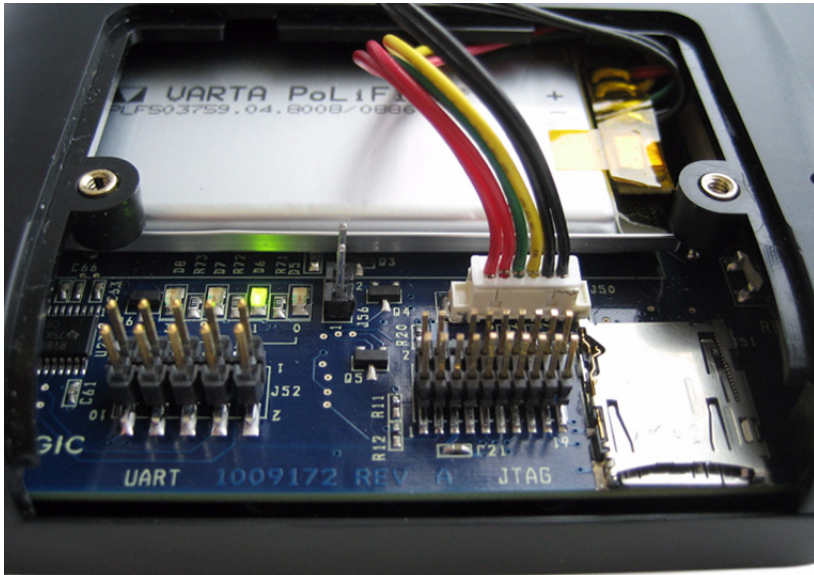
1. With the back of the Zoom MDK facing you, locate the battery connector on the baseboard PCB. See circled item in Figure 3.1.

Figure 3.1 – Battery connector on PCB



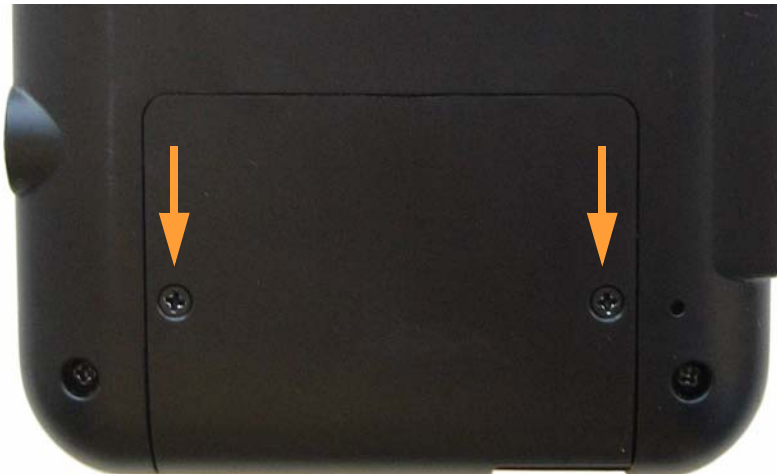
2. Align the end of the battery cables over the connector and make sure the side-tabs of the connectors align properly.
3. Fully insert the connector. Status LEDs to the left of the connector will begin to blink when the battery is connected. See Figure 3.2.

Figure 3.2 – Connected battery



4. Insert the back cover and use the two screws provided with the development kit to fasten the cover in place. See Figure 3.3.

Figure 3.3 – Fasten battery cover in place



4 Next Steps

4.1 Board Support Packages (BSPs)

There are multiple open source Linux BSPs available for the Zoom MDK. Please see Logic's website for availability and links to where these BSPs can be downloaded:
www.logicpd.com/ti/zoom_mdk

4.2 Charging the Zoom MDK

The Zoom MDK ships with an 1100 mAh Li-ion battery. To charge the battery, connect your MDK to a computer using the included USB A to mini-B cable. Connect the cable's USB mini-B end to the Zoom MDK mini-AB USB port and the cable's USB A end to a free USB port on the computer.

Charging the battery with the USB cable may require special software to be loaded on your computer. Please visit www.logicpd.com/ti/zoom_mdk for more details.

5 Product Notices

This development kit is intended for use for ENGINEERING DEVELOPMENT, DEMONSTRATION, OR EVALUATION PURPOSES ONLY and is not considered by TI and Logic to be a finished end-product fit for general consumer use. Persons handling the product(s) must have electronics training and observe good engineering practice standards. As such, the goods being provided are not intended to be complete in terms of required design-, marketing-, and/or manufacturing-related protective considerations, including product safety and environmental measures typically found in end products that incorporate such semiconductor components or circuit boards. This development kit does not fall within the scope of the European Union directives regarding electromagnetic compatibility, restricted substances (RoHS), recycling (WEEE), FCC, CE or UL, and therefore may not meet the technical requirements of these directives or other related directives.

ESD

The user assumes all responsibility and liability for proper and safe handling of the goods. Further, the user indemnifies TI and Logic from all claims arising from the handling or use of the goods. Due to the open construction of the product, it is the user's responsibility to take any and all appropriate precautions with regard to electrostatic discharge.

FCC Warning

This development kit is intended for use for ENGINEERING DEVELOPMENT, DEMONSTRATION, OR EVALUATION PURPOSES ONLY and is not considered by TI and Logic to be a finished end-product fit for general consumer use. It generates, uses, and can radiate radio frequency energy and has not been tested for compliance with the limits of computing devices pursuant to part 15 of FCC rules, which are designed to provide reasonable protection against radio frequency interference. Operation of this equipment in other environments may cause interference with radio communications, in which case the user at his own expense will be required to take whatever measures may be required to correct this interference.

6 Product Registration

In order to access the latest revision of this manual, as well as other documentation and software tools, please register your product online with a recent version of Internet Explorer or Mozilla Firefox. In addition to downloads access, registration provides future notifications when Logic releases documentation and software updates for your product.

Go to the “Create Account” section on the Logic Support website at <http://www.logicpd.com/support/>, and create a user account. You will receive an e-mail with your new username, password, and additional instructions. At this point, log in and complete the product registration form to gain access to product download files.

7 Support Resources

7.1 Frequently Asked Questions

Visit <http://www.logicpd.com/support/> for a complete list of FAQs for the Zoom Mobile Development Kit.

7.2 Technical Discussion Group

Visit <http://www.logicpd.com/support/> to join our Technical Discussion Group (TDG) and share valuable information with other designers. Please note that the TDG site requires its own account creation that is separate from the account for the main Logic website.

7.3 Warranty Statement

Refer to the “Important Notice” enclosed with the development kit.

Revision History

REV	EDITOR	REVISION DESCRIPTION	APPROVAL	DATE
1	Jed Anderson	Internal Release	JCA	02/25/08
A PN 1009509	Jed Anderson	Initial release of document	NJK	02/28/08

Please check www.logicpd.com for the latest revision of this manual and other documentation.

OMAP is a registered trademark of Texas Instruments Incorporated.

This page intentionally left blank.



embedded product solutions

411 N. Washington Ave. Suite 400 Minneapolis, MN 55401

T : 612.672.9495 F : 612.672.9489 I : www.logicpd.com

Logic Product Development makes no warranty for the use of its products. The Company assumes no responsibility for any errors which may appear in this document, reserves the right to change devices or specifications detailed herein at any time without notice, and does not make any commitment to update the information contained herein. The names of the sample source code files and the platform dependent environment variables may be subject to change without notice. Some steps and figures may vary between different versions of tools. No licenses to patents or other intellectual property of Logic are granted by the company in connection with the sale of Logic products, expressly or by implication.

All rights reserved. Logic Product Development. Intel, Renesas, and Sharp are registered trademarks. Pentium is a registered trademark of Intel. Windows is a registered trademark of Microsoft Corporation. Zoom and LogicLoader are trademarks of Logic Product Development. Terms and product names in this document may be trademarks of others.